

## WHAT ARE THE PROBLEMS OF HAVING TOO MANY FREE ROAMING DOGS?



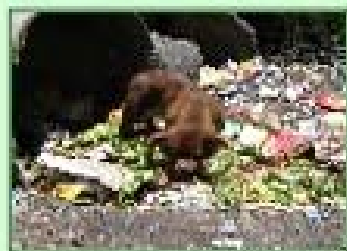
- Increasing incidences of dog bites
- Threat to human safety



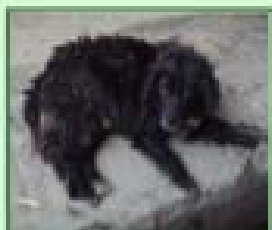
- Public health concerns (rabies and other diseases)



- Social Nuisance (barking, dog attacks)

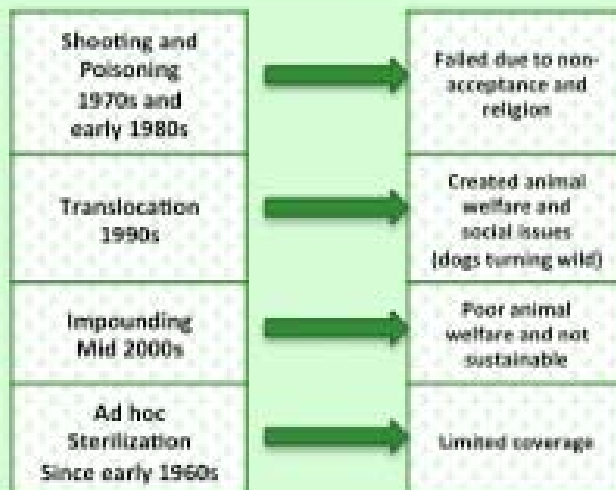


- Littering the environment



- Poor dog welfare (disease, motor accidents)

## WHAT HAVE WE TRIED SO FAR?



## SO WHAT NEXT?

**CNVR** (catch neuter vaccinate release)  
IS THE ONLY SCIENTIFICALLY PROVEN METHOD TO HUMANELY REDUCE OUR DOG POPULATION

*Fewer Dogs =*

- Reduced aggression from mothers protecting their young and from males seeking a mate
- Less packs roaming the streets causing a nuisance
- Reduced risk of dog attacks/bites

Every dog in the Program receives a Rabies vaccination



Reduction and eventual elimination of rabies in Bhutan!

**THIMPHU THROMDE IS HOLDING A MASS CNVR CAMPAIGN IN JULY 2013!**

*Every dog will be:*

- Sterilized
- Vaccinated against rabies
- Provided treatment if sick or injured



We can help up to **4000** DOGS with your support and participation!

## WHAT CAN I DO?

- Bring along your pets or community dogs to National Animal Hospital  
(Timetable on the back)
- Assist the dog catchers in your locality to ensure we can help *EVERY DOG*
- Spread the word: Always sterilize and vaccinate your pets!

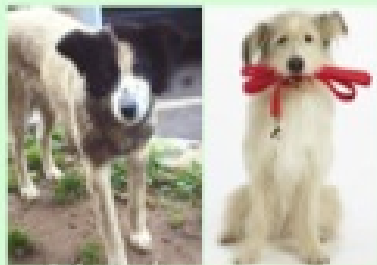
# DID YOU KNOW?

**Our pet dogs directly impact the ever increasing population of street dogs**



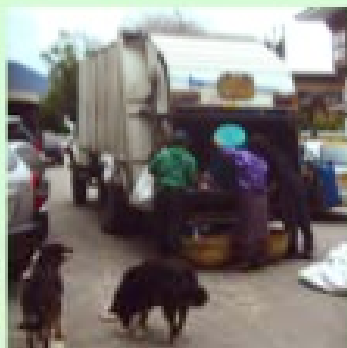
**REMEMBER:**

- Register your pets
- Sterilize and vaccinate your pets
- Keep your pets on a leash in public places
- Just feeding the dogs in your locality is not enough. Make sure they are sterilized and vaccinated!



**Our food wastes play a role towards the dog population too!**

- KEEP YOUR ENVIRONMENT WASTE FREE
- PUT FOOD WASTES INTO A RUBBISH BIN
- DOG-PROOF YOUR RUBBISH BINS



Monday – Saturday 1<sup>st</sup> – 31<sup>st</sup> July  
Bring your dogs between 9am – 11am

Dog catching in your locality will be as follows:

Zone	Date		
South Throm	1-Jul-13	11-Jul-13	25-Jul-13
Chang Lungtey	2-Jul-13	15-Jul-13	20-Jul-13
Chang Jiji	3-Jul-13	16-Jul-13	27-Jul-13
Chang Zamtog	4-Jul-13	17-Jul-13	24-Jul-13
Chang Gedaphu	5-Jul-13	18-Jul-13	30-Jul-13
Thimphu Throm Central	6-Jul-13	19-Jul-13	24-Jul-13
Chang Motithang	8-Jul-13	20-Jul-13	31-Jul-13
Jungzhina	9-Jul-13	22-Jul-13	
North Throm	10-Jul-13	23-Jul-13	

Thimphu Thromde & National Dog Population Management and Rabies Control Programme



Mr. Tashi Tshering  
Thimphu Thromde  
Ph: 17602119  
Email:ttshering9292

Dr. Hiruka Mahat  
Dept. of Livestock  
Ph: 17607846  
Email:mahathiruka

Mr. Towchu Rabgay  
Dept. of Livestock  
Ph: 17605539  
Email:



*Towards fewer and healthier dogs*



*For a safer community*



THIMPHU THROMDE  
Norzin Lam  
UV 8 Chang  
PO Box 573/11001

National Centre for Animal Health  
Department of Livestock  
Ministry of Agriculture and Forests  
Humane Society International