

## Statistics on Community Forests (CFs) as of December 2017

This statistical release is based on analysis of Community Forests (CFs) data sourced from the Department of Forests and Park Services (DoFPS), Ministry of Agriculture and Forests (MoAF). It presents year wise establishment of the CFs, cumulative numbers of CFs, area in hectares and the number of Community Forest Management Group (CFMG) members in the country starting from 1997 till December 2017. CF is defined as “any area of State Reserved Forest Land designated for management by a local community in accordance with the provisions of the Forest and Nature Conservation Rules and Regulations of Bhutan (2017)”.

- The first community forest in Bhutan was established in **1997** in an area of **937.82** hectares in Drametse Gewog under Mongar Dzongkhag.
- From 1998 till 2000, no new CFs were established.
- The highest number of CFs established in a single year was in 2012 with the establishment of **135** new CFs in the country (Figure 1).

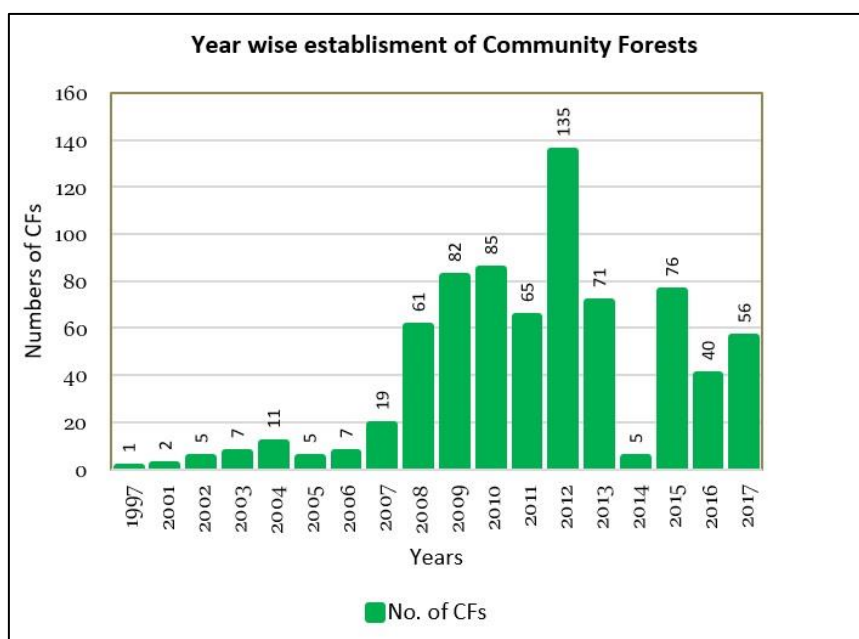


Figure 1: Year wise establishment of CFs

Source: FRMD, DoFPS

- During the last five years from 2012- 2017, the least number of CF established was in **2014** with the addition of **5** CFs only.
- As of December 2017, the total number of CFs in the country stand at **733** CFs.
- The total area of CFs in the country stands at **83215.17** hectares, which is about 3% of the total forest area (Figure 2).

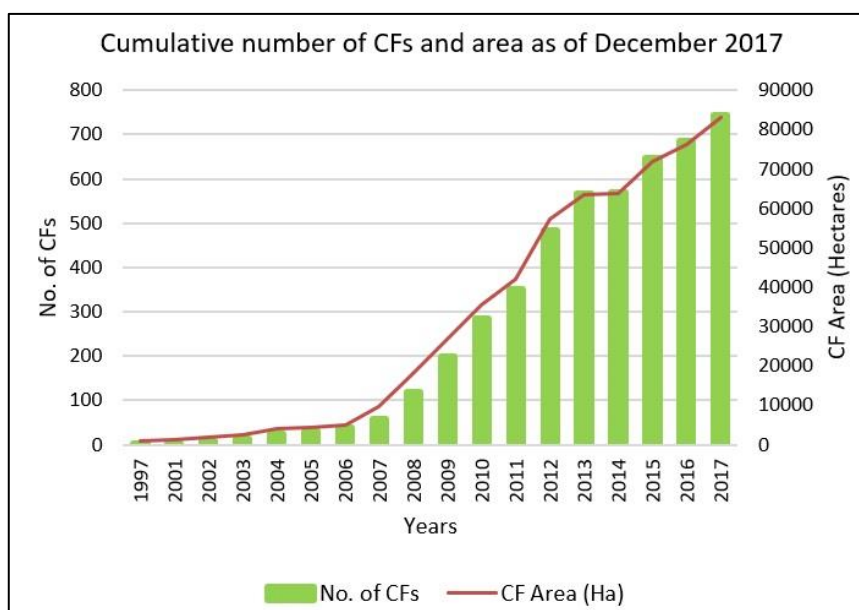


Figure 2: Number of CFs and its area

Source: FRMD, DoFPS

- The CF membership increased from **144** households in 1997 to **30,352** households by the end of December 2017 (Figure 3).

- Table 1 shows Dzongkhag wise numbers of CFs, area and membership.

- Wangdiphodrang Dzongkhag has the highest numbers of CFs at 82 and Gasa Dzongkhag has the least at 7.

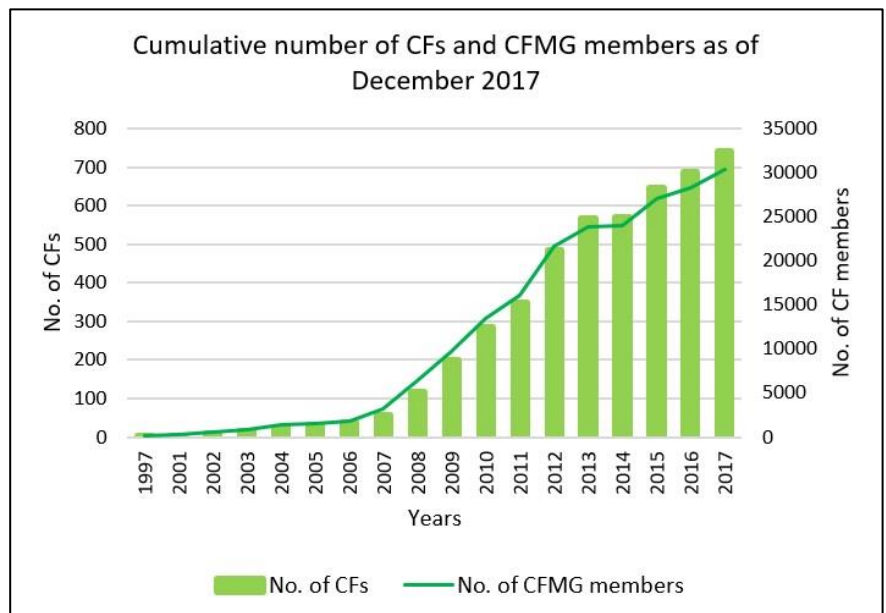


Figure 3: Number of CFs and its membership

Source: FRMD, DoFPS

- Area wise, Tashigang Dzongkhag tops the list with an area of **9923.07** hectares and Gasa Dzongkhag has the least CF coverage with an area of **453.46** hectares.

- The total number of CFMG membership in the country stands at **30,352** members/households as of December 2017.

- Tashigang Dzongkhag with **2955** households/members has the highest number of CFMG members and Gasa Dzongkhag has the least membership with **181** members/ households.

Table 1: Dzongkhag wise number of CFs, area and membership as of Dec 2017

Dzongkhag	Nos. of CFs	CF Area (ha)	Nos. of households
Bumthang	33	3399.85	972
Chukha	56	3970.02	1825
Dagana	27	2278.02	1109
Gasa	7	452.46	181
Haa	18	1696.80	534
Lhuntse	31	2744.54	982
Mongar	32	7594.35	1919
Paro	27	4387.72	1506
Pemagatshel	47	4014.34	2246
Punakha	39	3623.44	1305
Samdrupjongkhar	48	6294.57	2384
Samtse	52	4739.73	2083
Sarpang	32	3306.85	1265
Thimphu	21	2749.77	837
Trashigang	53	9923.07	2955
Trashiyangtse	30	3516.77	1455
Trongsa	29	3063.74	951
Tsirang	43	6512.12	2502
Wangdue	82	6146.79	2280
Zhemgang	26	2800.23	1061
<b>Total</b>	<b>733</b>	<b>83215.17</b>	<b>30352</b>

Source: FRMD, DoFPS

- Figure 4 shows the number of male and female office bearers of CFMG in the country as of December 2017.
- Out of the total **3247** office bearers of CFMG in the country, **2651** are male (**82%** of the total office bearers of CFMG) and **596** are female (**18%** of the total office bearers in CFMG).

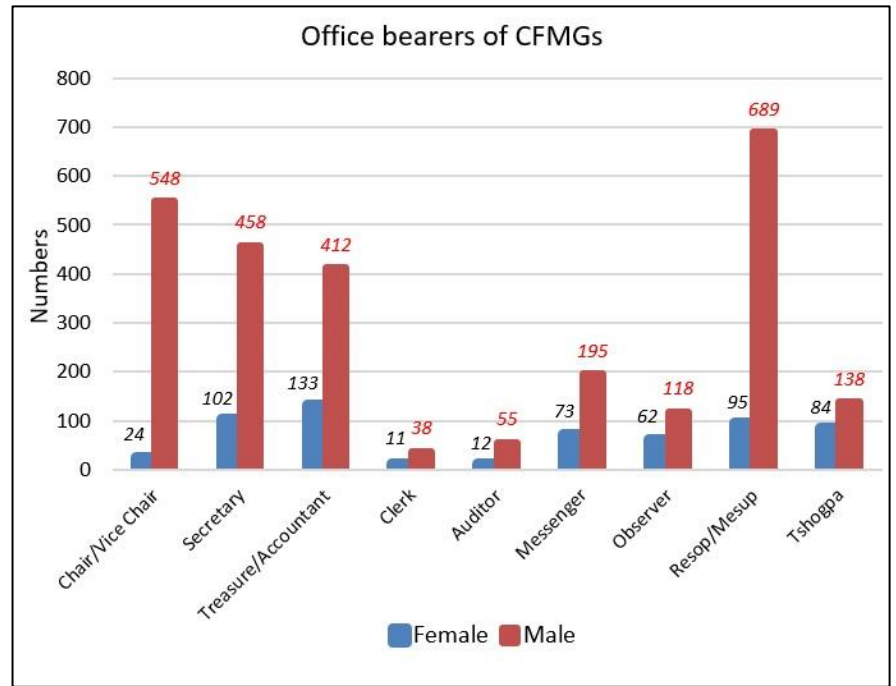


Figure 4: Number of male and female office bearer Source: FRMD, DoFPS

For any queries on this publication, please contact:

Chencho Dukpa, Chief Agriculture Officer, RNR Statistics Division, Directorate Services, MoAF, Thimphu. Tel +975 02 323745. Email: cdukpa@moaf.gov.bt